

Final frontlabel

Can you put this tree part here a bit away from the others to the left, to fill a bit more in width?



Eliminate outer line please

CURRENT:

ALC. 4,7 % · PLATO 11,2 · IBU 27 · CONT. 0,33L · HOPFEN: PERLE, SELECT, ARIANA, HBR. PURE · GENUSSTEMPP. 9 C

PLEASE RE-TEXT (and add the circle for 9 C):

4,7% VOL. ALCOHOL · 11,5% STW. · 18 IBU. · 4 VERSCH. AROMAHOPFENARTEN · 3 VERSCH. MALZE · CONT. 0,33L · GENUSSTEMPERATUR 9 C

4,7% VOL. ALCOHOL · 11,5% STW. · 18 IBU. · 4 VERSCH. AROMAHOPFEN · 3 VERSCH. MALZE · CONT. 0,33L · GENUSSTEMPERATUR 9 C

4,7% VOL. ALCOHOL · 11,5% STW. · 18 IBU. · 4 VERSCH. AROMAHOPFEN · 3 VERSCH. MALZE · CONT. 0,33L · GENUSSTEMP. 9 C

4,7% VOL. ALC. · 11,5% STW. · 18 IBU. · 4 VERSCH. AROMAHOPFEN · 3 VERSCH. MALZE · CONT. 0,33L · GENUSSTEMP. 9 C

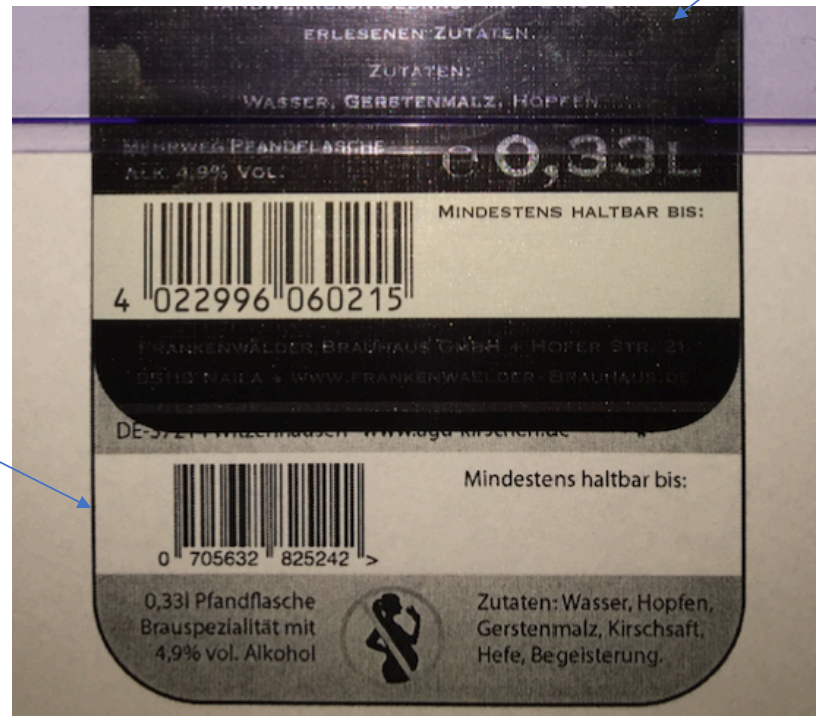
4,7% VOL. ALCOHOL · 11,5% STW. · 18 IBU. · 4 VER. AROMAHOPFEN · 3 VER. MALZE · CONT. 0,33L · GENUSSTEMP. 9 C

4,7% VOL. ALC. · 11,5% STW. · 18 IBU. · 4 VER. AROMAHOPFEN · 3 VER. MALZE · CONT. 0,33L · GENUSSTEMP. 9 C

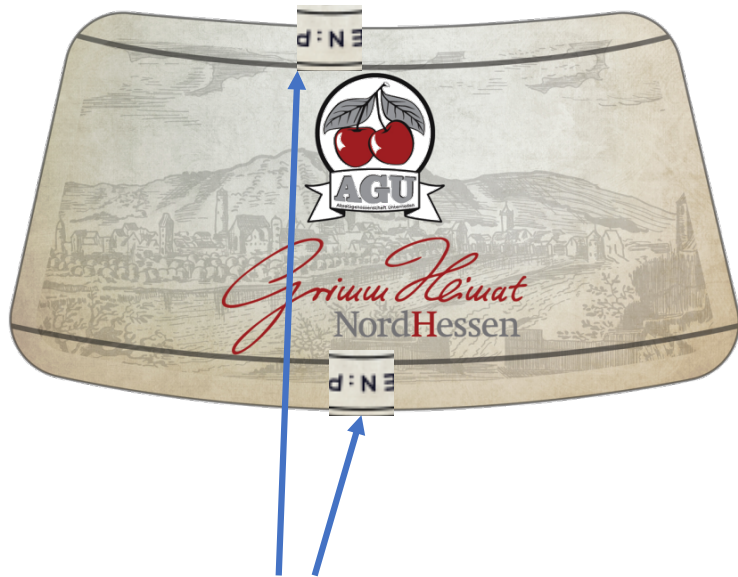
4,7% VOL. ALC. · 11,5% STW. · 18 IBU. · 4 AROMAHOPFEN · 3 MALZE · CONT. 0,33L · GENUSSTEMP. 9 C

Final backlabel

Reference label with bigger
bar code (better to scan)

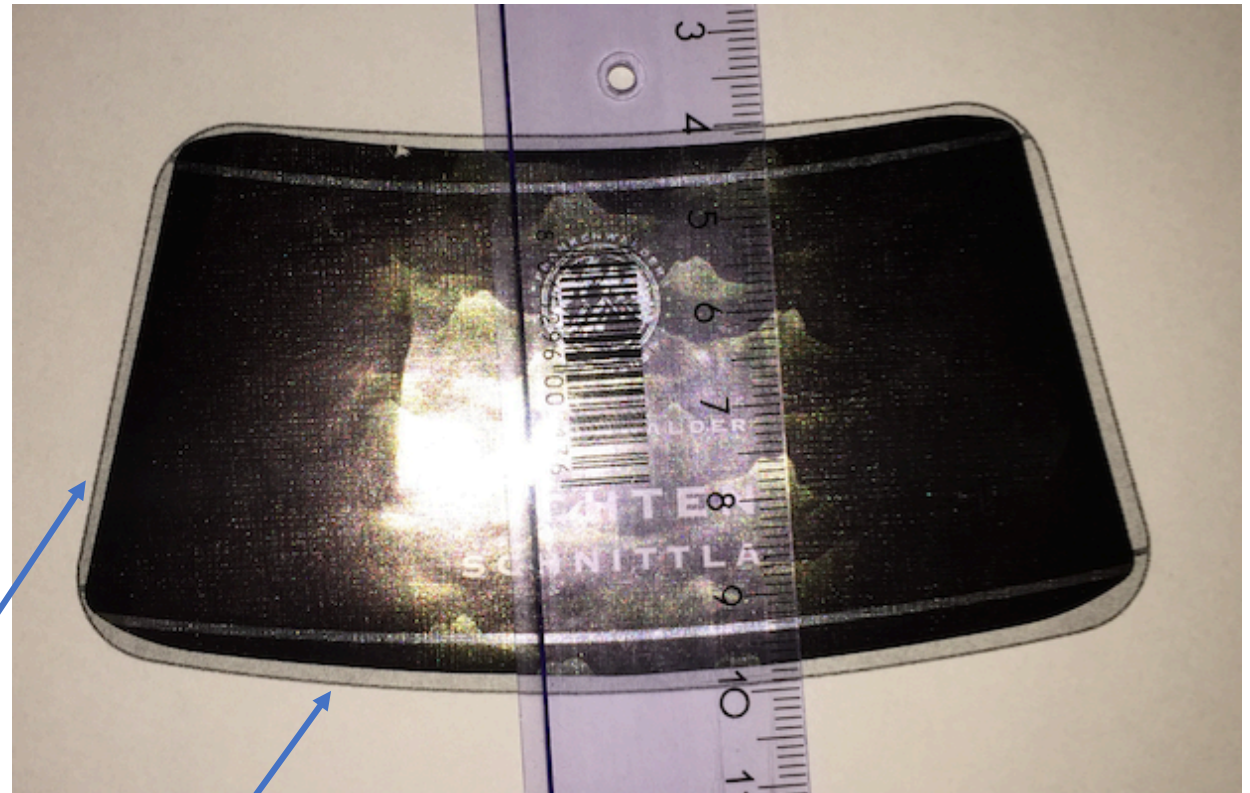


Final neckholder



Like on the front label

A bit to big on
sides



A bit to big top and
bottom